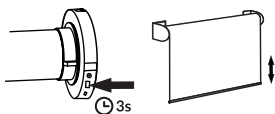


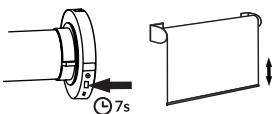
Delete all remote controls

Attention: this procedure does not delete open and close limits or the favorite positions.

1. Hold the **HEAD** button for 3 seconds, until the motor moves to indicate the process has started.



2. Hold the **HEAD** button for 7 seconds, until the motor moves to indicate that the all paired remote controls were deleted from its memory.



Wall remote control specifications

Transmission power: 10dBm
ASK 433.92MHz wireless transmission
Outdoor transmission distance: 200m
Indoor transmission distance: 30m
Working temperature: -20°C ~ +55°C
Battery model: CR2032

⚠ WARNING

- **INGESTION HAZARD:** This product contains a button cell or coin battery.
- **DEATH** or serious injury can occur if ingested.
- A swallowed button cell or coin battery can cause **Internal Chemical Burns** in as little as **2 hours**.
- **KEEP** new and used batteries **OUT OF REACH OF CHILDREN**.
- **Seek immediate medical attention** if a battery is suspected to be swallowed or inserted inside any part of the body.



-Remove and immediately recycle or dispose of used batteries according to local regulations and keep away from children. Do NOT dispose of batteries in household trash or incinerate.

-Even used batteries may cause severe injury or death.

-Call a local poison control center for treatment information.

-The compatible battery type: CR2540

-The nominal battery voltage: DC 3V

-Non-rechargeable batteries are not to be recharged.

-Do not force discharge, recharge, disassemble, heat above 55°C or 130°F or incinerate. Doing so may result in injury due to venting, leakage or explosion, resulting in chemical burns.

-Ensure the batteries are installed correctly according to polarity (+ and -).

-Do not mix old and new batteries, different brands or types of batteries, such as alkaline, carbon-zinc, or rechargeable batteries.

-Remove and immediately recycle or dispose of batteries from equipment not used for an extended period of time according to local regulations.

-Always completely secure the battery compartment. If the battery compartment does not close securely, stop using the product, remove the batteries, and keep them away from children.

Compatible products for automating your blinds



Smart Controller

Control your blinds from anywhere using your phone or tablet. Voice commands are available if integrated with Amazon Alexa, Google Assistant or Siri Shortcuts.



Blue Link

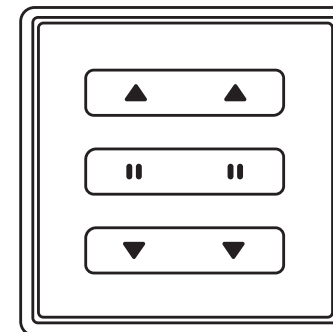
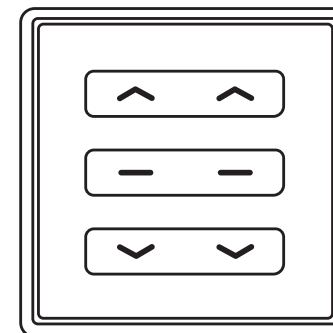
Local control of your motorized blinds using your phone or tablet. Set schedules to automate your home. No need to connect to your Wi-fi or router.

For more information about our **motors, remote controls, compatible products and integrations**, please visit our website neosmartblinds.com. To buy one of these products, please contact your dealer.

NEO WALL REMOTE CONTROL

Compatible with all Neo motors, except TM-WO and TM-WB motors

Version 3.0

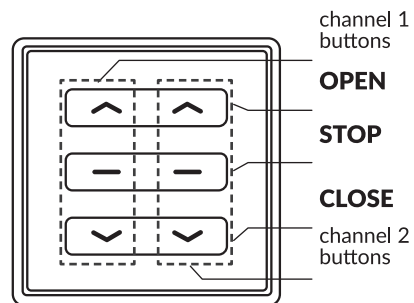


ENGLISH

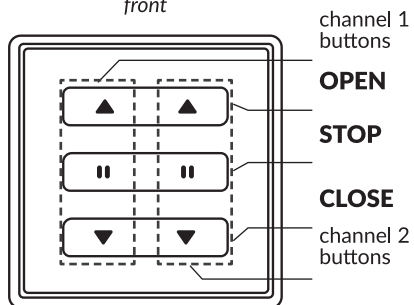
Models
WS-202

powered by Neo Smart Blinds

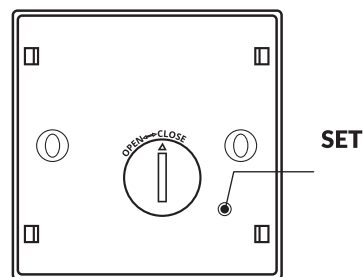
Getting to know your Neo Wall Remote Control



front



front



back

Basic operation

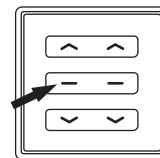
Unless noted, all commands are sent from a wall remote control to a motor, and will only have effect if the **wall remote control's channel has been paired** with the desired motor.

| Key Combination | Description |
|--------------------|---|
| Press OPEN | Move all the way to the open limit. ¹ |
| Press CLOSE | Move all the way to the close limit. ¹ |
| Press STOP | Stop ongoing motion. |

1 - The motor will stop on button release if the limit is not yet set.

Choosing a channel

In order for a wall remote control to execute commands on a motor, its active channel must be paired with that motor. Use the instructions below to choose a channel, then proceed to the pairing process.

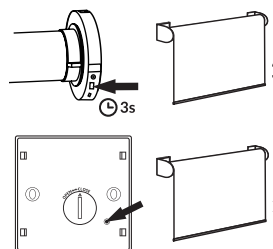


1. Press the **STOP** button of the corresponding channel you want to pair the motor to activate the channel.

Pairing process

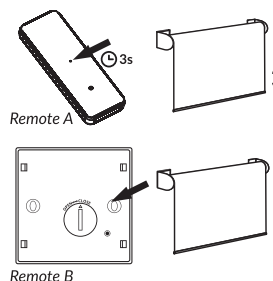
Set remote control channel using the button on the HEAD

1. Hold the **HEAD** button for 3 seconds, until the motor quickly moves.
2. Press the **SET** button on the back of the wall remote control, the motor will move to confirm the operation.



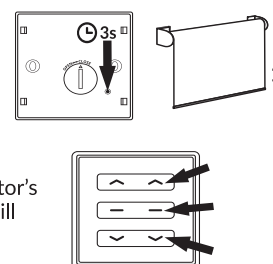
Copy remote control channel

1. Using a previously programmed remote control (A), hold the **SET** button on the back of its case for 3 seconds, until the motor moves.
 2. Using a new remote control (B), press **SET** button on the back of its case, the motor will move to confirm the new remote/channel was paired.
- Note: this procedure is the same regardless the model of the remote control used on both steps.*



Reverse direction

1. Hold the **SET** button on the back of the remote control for 3 seconds. The motor will move to indicate the process has started.
2. Press once, at the same time, the buttons **OPEN + STOP + CLOSE** motor's corresponding channel. The motor will move to confirm the operation.

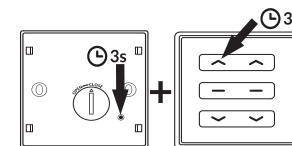


Setting or adjusting limits

The motor's open and close limits are set individually.

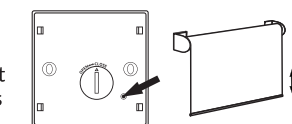
Open limit

1. Hold the **SET + OPEN** buttons of the motor's corresponding channel at the same time for 3 seconds. The motor will move to indicate the process to set up the open limit has started.



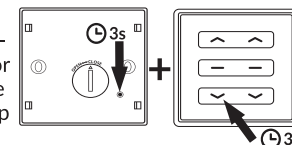
2. Use **OPEN, STOP** and **CLOSE** buttons to go to the desired open position.

3. Press **SET** button on the back of the remote control, the motor will move to confirm that the new open limit position has been saved.



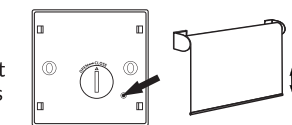
Close limit

1. Hold the **SET + CLOSE** buttons of the motor's corresponding channel at the same time for 3 seconds. The motor will move to indicate the process to set up the close limit has started.



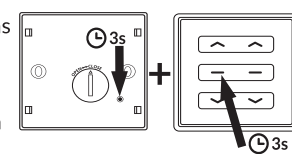
2. Use **OPEN, STOP** and **CLOSE** buttons to go to the desired close position.

3. Press **SET** button on the back of the remote control, the motor will move to confirm that the new close limit position has been saved.



Delete limits

1. Hold the **SET + STOP** buttons of the motor's corresponding channel at the same time for 3 seconds. The motor will move to indicate the limits have been deleted.



Don't forget to always use the button of the motor's corresponding channel you want to adjust.