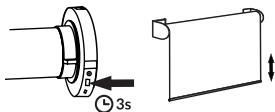


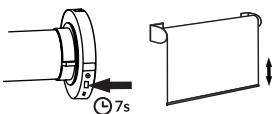
## Delete all remote controls

**Attention:** this procedure does not delete open and close limits or the favorite positions.

1. Hold the **HEAD** button for 3 seconds, until the motor moves to indicate the process has started.



2. Hold the **HEAD** button for 7 seconds, until the motor moves to indicate that the all paired remote controls were deleted from its memory.



## Wall remote control specifications

Transmission power: 10dBm  
ASK 433.92MHz wireless transmission  
Outdoor transmission distance: 200m  
Indoor transmission distance: 30m  
Working temperature: -20°C ~ +55°C  
Battery model: CR2032

### ⚠ WARNING

- **INGESTION HAZARD:** This product contains a button cell or coin battery.
- **DEATH** or serious injury can occur if ingested.
- A swallowed button cell or coin battery can cause **Internal Chemical Burns** in as little as **2 hours**.
- **KEEP** new and used batteries **OUT OF REACH OF CHILDREN**.
- **Seek immediate medical attention** if a battery is suspected to be swallowed or inserted inside any part of the body.



-Remove and immediately recycle or dispose of used batteries according to local regulations and keep away from children. Do NOT dispose of batteries in household trash or incinerate.

-Even used batteries may cause severe injury or death.

-Call a local poison control center for treatment information.

-The compatible battery type: CR2540

-The nominal battery voltage: DC 3V

-Non-rechargeable batteries are not to be recharged.

-Do not force discharge, recharge, disassemble, heat above 55°C or 130°F or incinerate. Doing so may result in injury due to venting, leakage or explosion, resulting in chemical burns.

-Ensure the batteries are installed correctly according to polarity (+ and -).

-Do not mix old and new batteries, different brands or types of batteries, such as alkaline, carbon-zinc, or rechargeable batteries.

-Remove and immediately recycle or dispose of batteries from equipment not used for an extended period of time according to local regulations.

-Always completely secure the battery compartment. If the battery compartment does not close securely, stop using the product, remove the batteries, and keep them away from children.

## Compatible products for automating your blinds



### Smart Controller

Control your blinds from anywhere using your phone or tablet. Voice commands are available if integrated with Amazon Alexa, Google Assistant or Siri Shortcuts.



### Blue Link

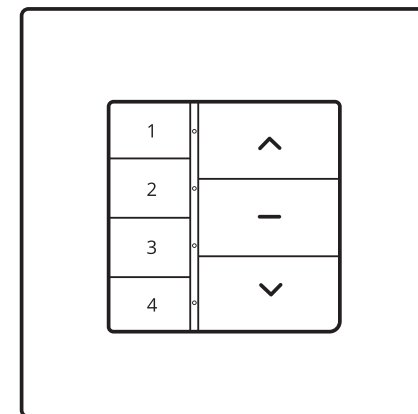
Local control of your motorized blinds using your phone or tablet. Set schedules to automate your home. No need to connect to your Wi-fi or router.

For more information about our **motors, remote controls, compatible products and integrations**, please visit our website [neosmartblinds.com](http://neosmartblinds.com). To buy one of these products, please contact your dealer.

# NEO WALL REMOTE CONTROL

Compatible with all Neo motors,  
except TM-WO and TM-WB motors

Version 2.0

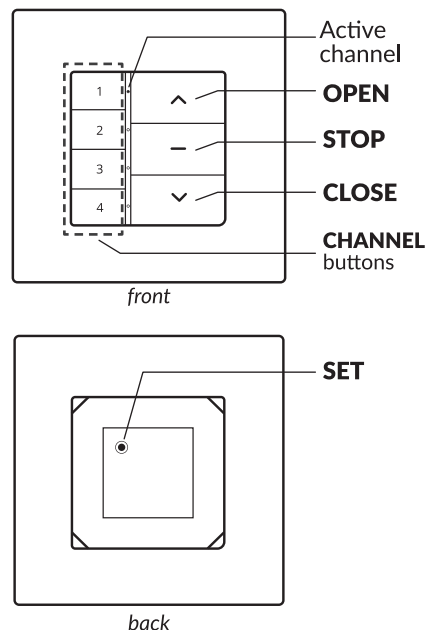


ENGLISH

Models  
WS-204

powered by Neo Smart Blinds

# Getting to know your Neo Wall Remote Control



## Basic operation

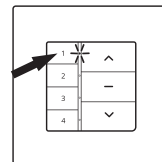
Unless noted, all commands are sent from a remote control to a motor, and will only have effect if the remote control's active channel has been paired with the desired motor.

Key	Description
Press <b>OPEN</b>	The motor moves all the way to the open limit <sup>1</sup> .
Press <b>CLOSE</b>	The motor moves all the way to the close limit <sup>1</sup> .
Press <b>STOP</b>	The motor stops any ongoing motion.
Press <b>CHANNEL</b>	The remote control make the corresponding channel active <sup>2</sup> .

1 - The motor will stop on button release if the limit is not yet set.  
 2 - This command is not sent to the motor, and affects only the remote control on which it is executed.

## Choosing a channel

In order for a wall remote control to execute commands on a motor, its active channel must be paired with that motor. Use the instructions below to choose a channel, then proceed to the pairing process.

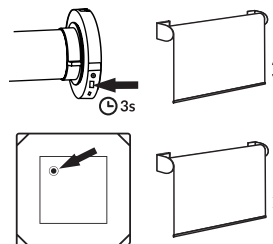


1. Press one of the four **CHANNEL** buttons you want to pair the motor to make it active.

## Pairing process

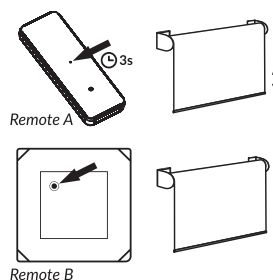
### Set remote control channel using the button on the HEAD

1. Hold the **HEAD** button for 3 seconds, until the motor quickly moves.
2. Press the **SET** button on the back of the remote control, the motor will move to confirm the operation.



### Copy remote control channel

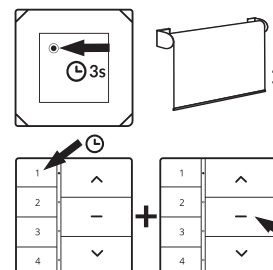
1. Using a previously programmed remote control (A), hold the **SET** button on the back of the remote control for 3 seconds, until the motor quickly moves.
2. Using the new remote control (B), press **SET** button on the back of the remote control, the motor will move to confirm the new remote/channel was paired.



**Note:** this procedure is the same regardless the model of the remote control used on both steps.

## Reverse direction

1. Hold the **SET** button on the back of the remote control for 3 seconds. The motor will quickly move to indicate the process has started.
2. Hold the **CHANNEL 1** button then, press the **STOP** button once. the motor will move to confirm the operation.



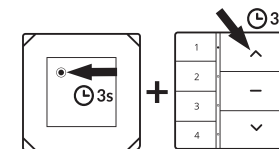
**Note:** on step 2, use the channel 1 button even if you are reversing the direction for a motor in a different channel.

## Setting limits

The motor's open and close limits are set individually.

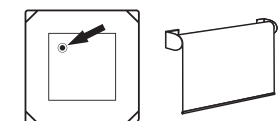
### Open limit

1. Hold the **SET + OPEN** buttons of the motor's corresponding channel at the same time for 3 seconds. The motor will move to indicate the process to set up the open limit has started.



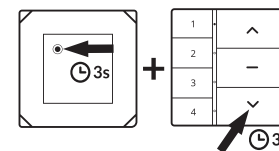
2. Use **OPEN, STOP** and **CLOSE** buttons to go to the desired open position.

3. Press **SET** button on the back of the remote control, the motor will move to confirm that the new open limit position has been saved.



### Close limit

1. Hold the **SET + CLOSE** buttons of the motor's corresponding channel at the same time for 3 seconds. The motor will move to indicate the process to set up the close limit has started.



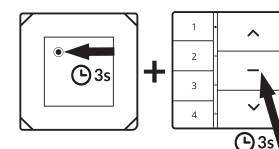
2. Use **OPEN, STOP** and **CLOSE** buttons to go to the desired close position.

3. Press **SET** button on the back of the remote control, the motor will move to confirm that the new close limit position has been saved.



### Delete limits

1. Hold the **SET + STOP** buttons of the motor's corresponding channel at the same time for 3 seconds. The motor will move to indicate the limits have been deleted.



**Don't forget to always select the correct channel of the motor you want to adjust.**